

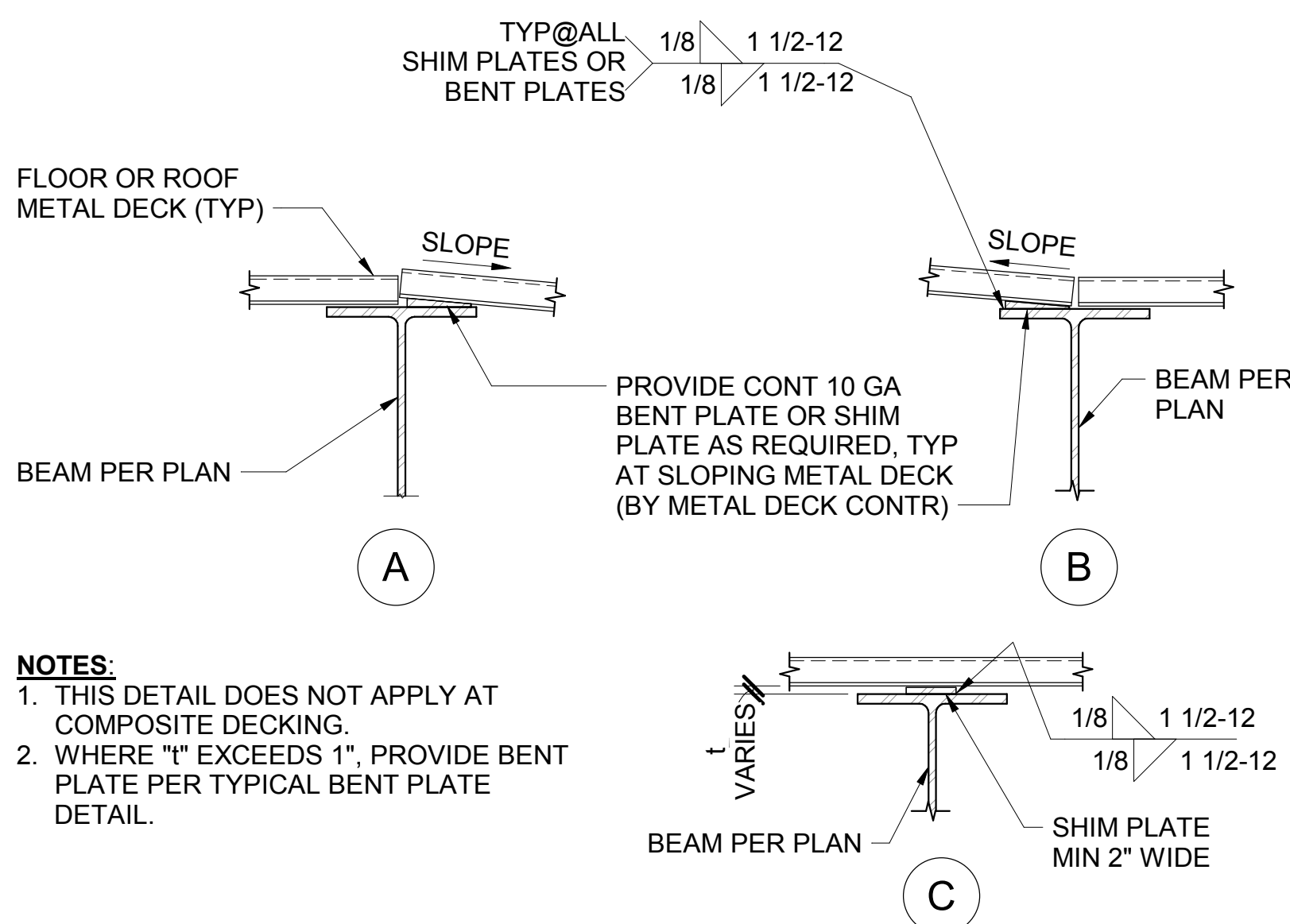
NOTES:

1. SHEAR PLATE THICKNESS TO MATCH SUPPORTED BEAM WEB THICKNESS (3/8" MIN).
2. HORIZONTAL SHORT SLOTTED HOLES MAY BE USED AT CONTRACTORS OPTION EXCEPT AT SEISMIC CONNECTIONS.

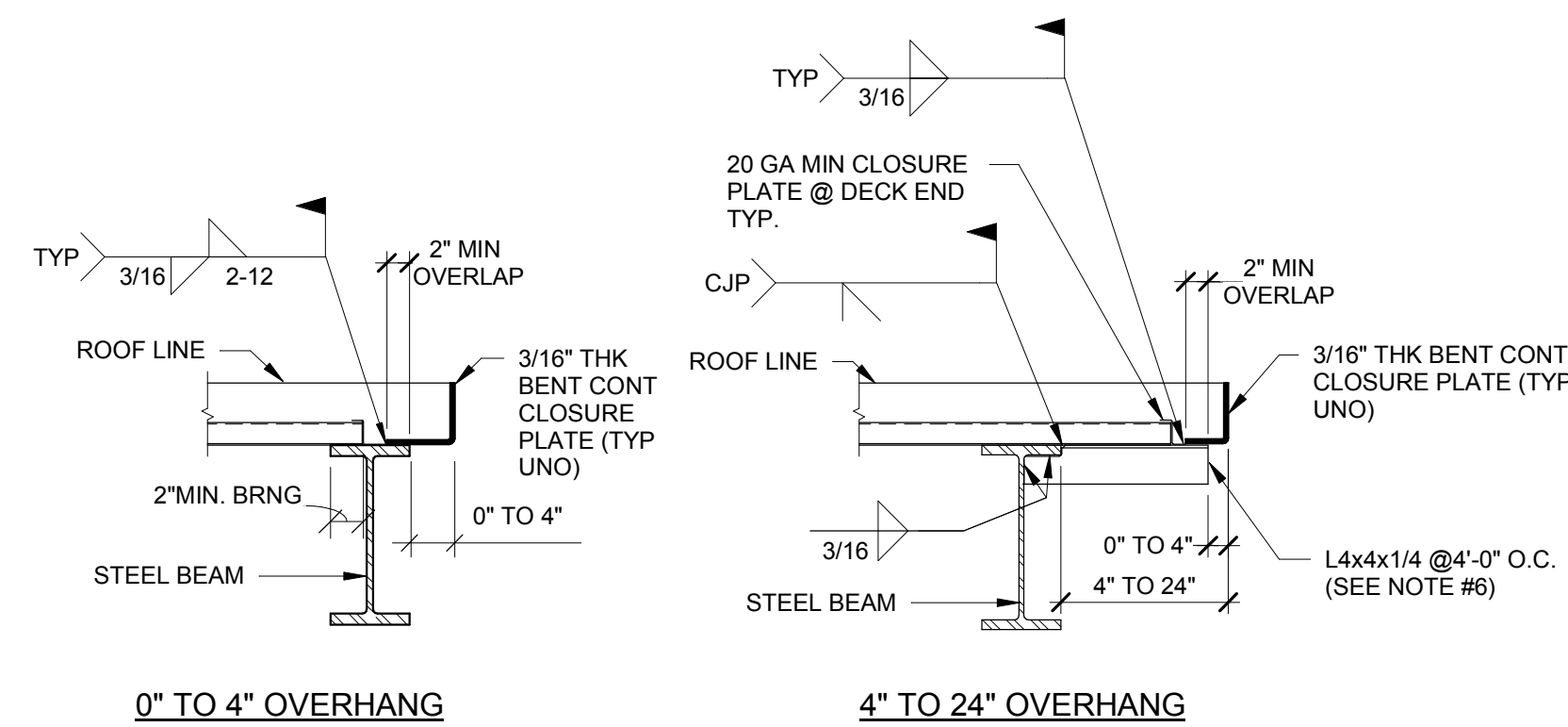
IDENTIFICATION STAMP
DIV. OF THE STATE ARCHITECT
APP: 03-120551 INC:
REVIEWED FOR
SS ☒ FLS ☒ ACS ☒
DATE: 01/11/2021

REVISIONS

TYPICAL PENETRATION IN METAL DECK



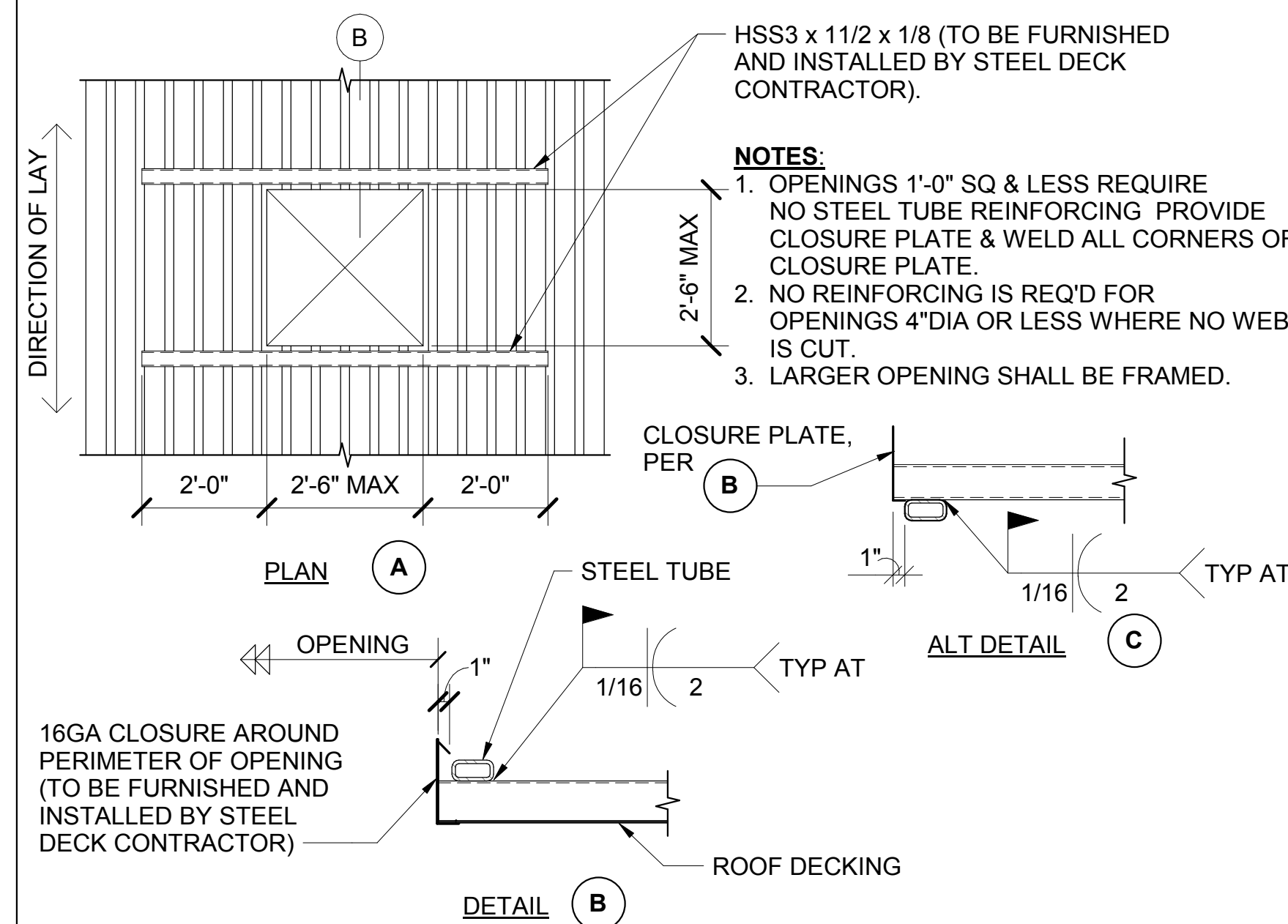
TYPICAL ROOF DECK DETAIL	9
--------------------------	---



NOTES:

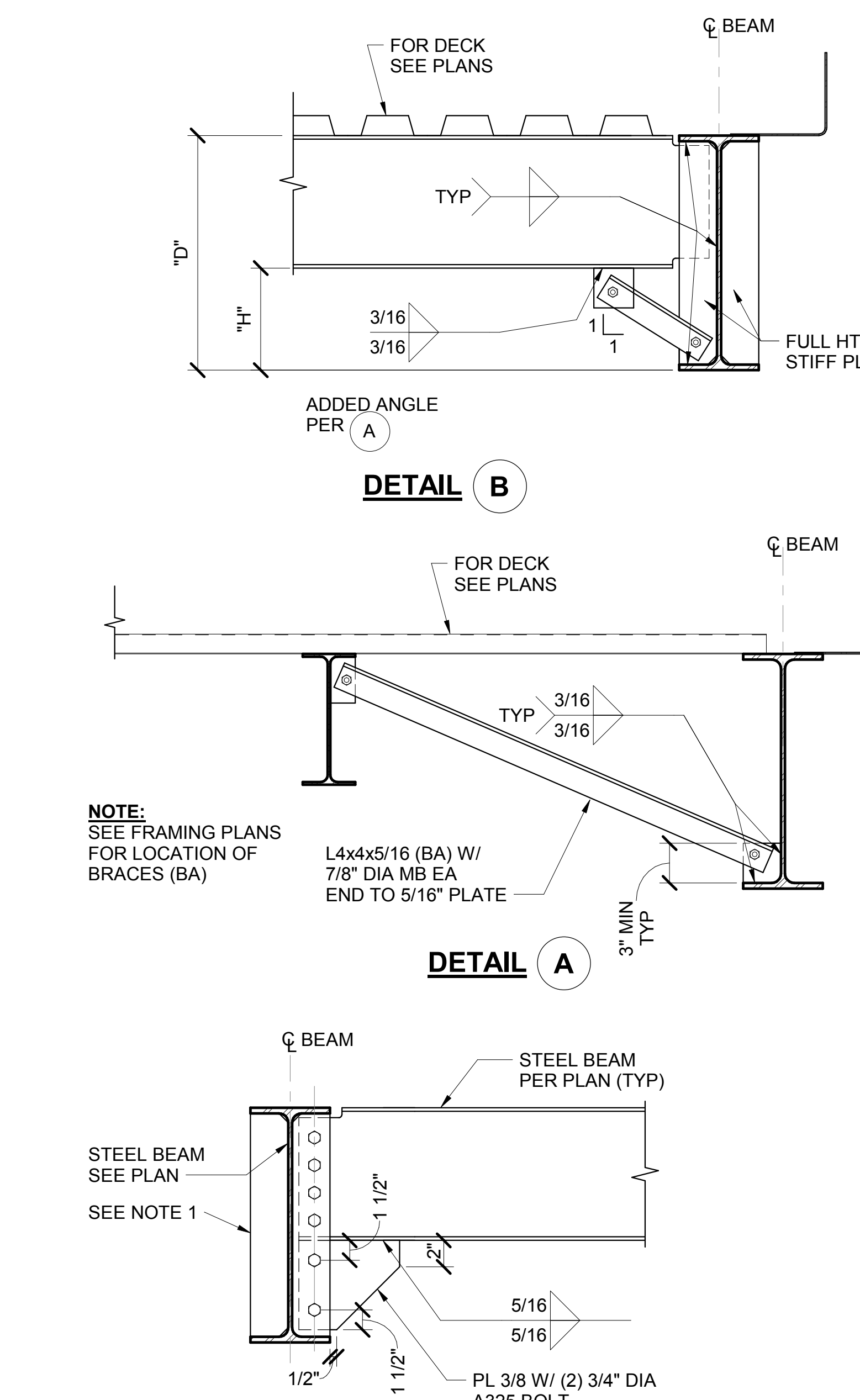
1. PROVIDE 20 GA. CLOSURE AT END OF DECK- TYP.
2. DECK PERPENDICULAR TO BEAM SHOWN. DECK PARALLEL TO BEAM CONDITION SIMILAR
3. OUTRIGGER ANGLES MAY BE SHOP OR FIELD WELDED AT CONTRACTOR'S OPTION.

BEAM PENETRATION DETAIL	5
-------------------------	---

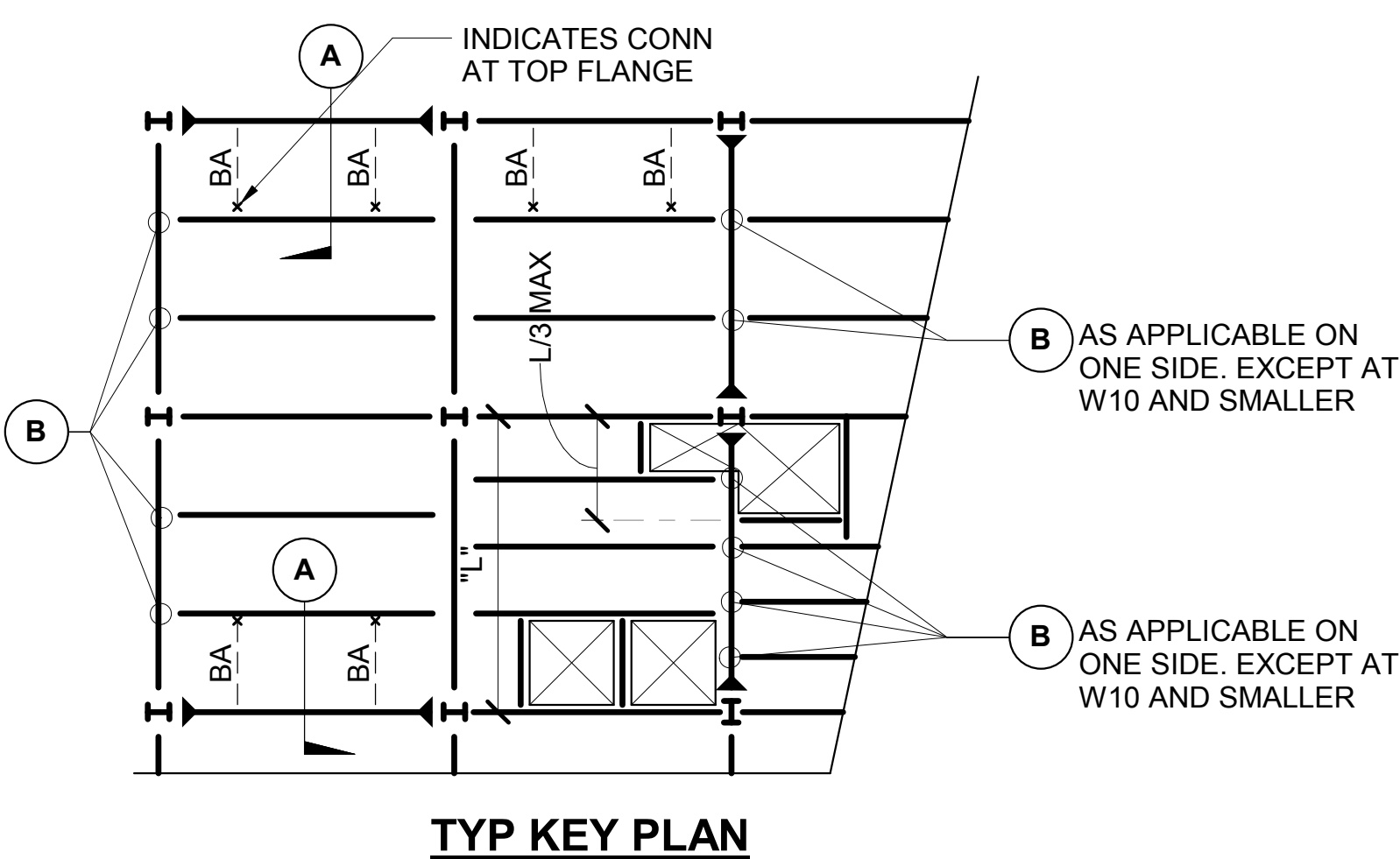


TYPICAL DECK OPENING	6
-----------------------------	----------


TYPICAL SHIM PLATE DETAIL



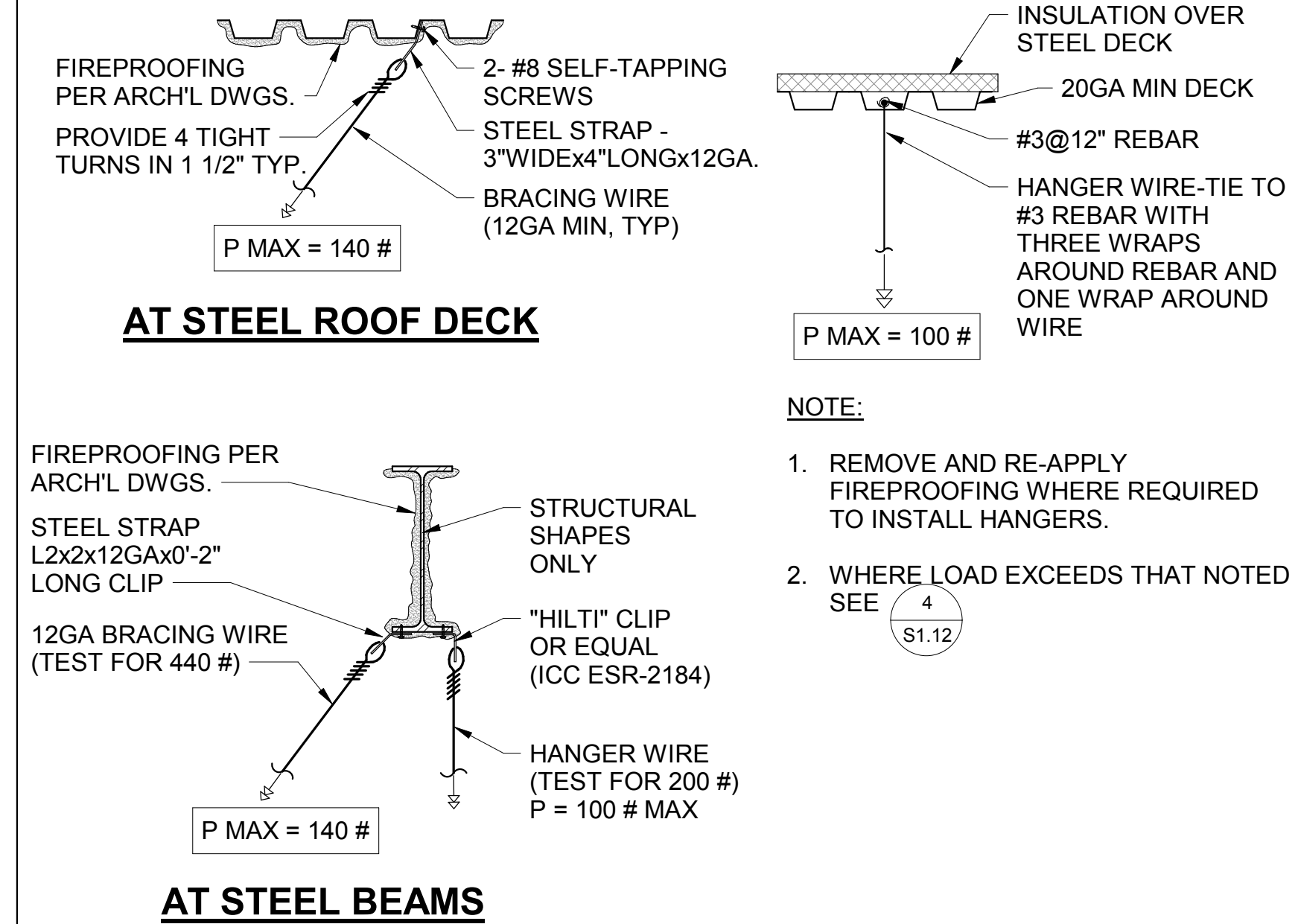
EDGE OF DECK AT ROOF	10
----------------------	----



NOTES:

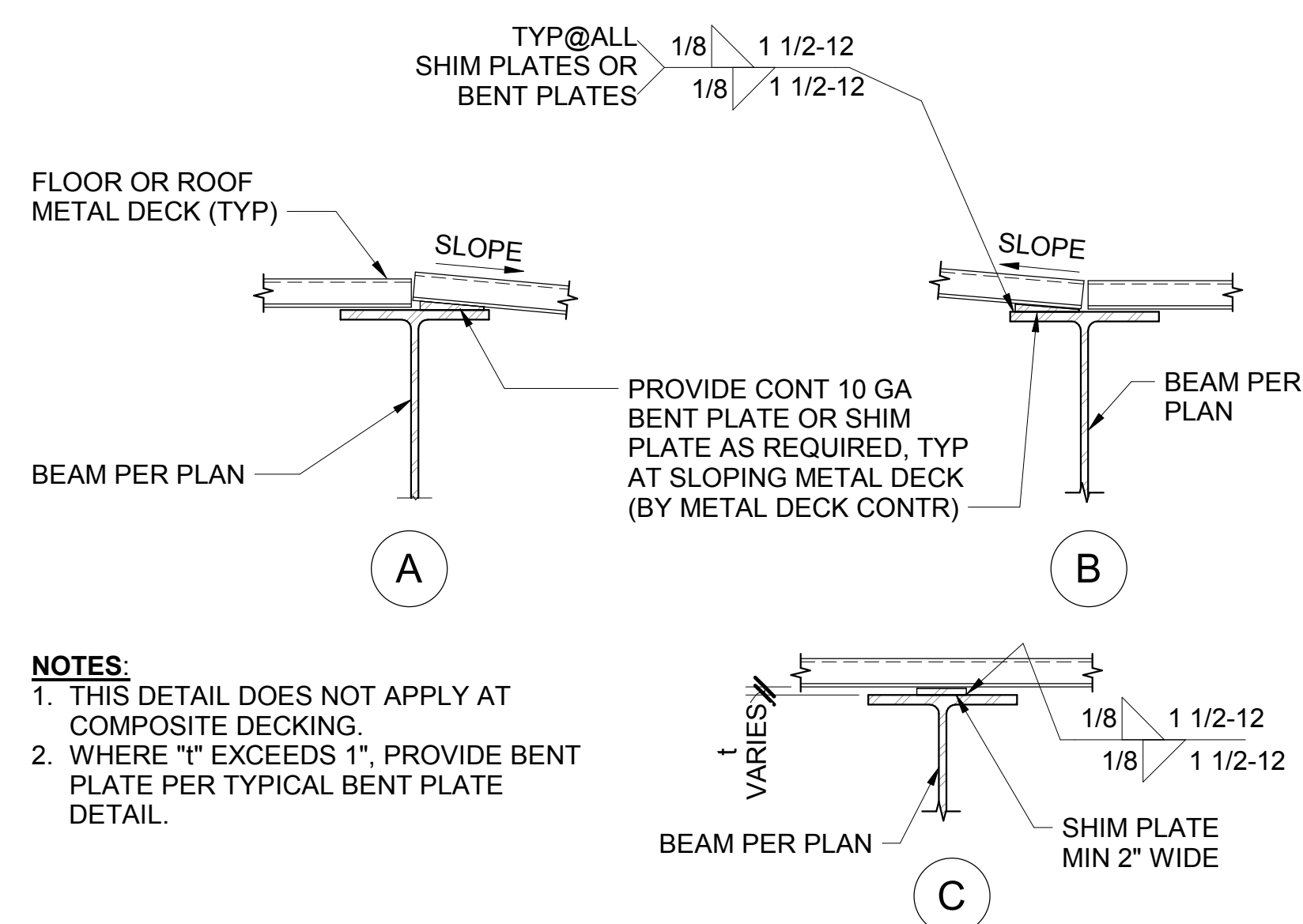
1. WHERE BEAMS OCCUR BOTH SIDES PLACE FULL HEIGHT STIFFENER ON SIDE WITH LARGER BEAM
2. ADDED L SHALL BE PROVIDED AT PERIMETER BEAMS IN ALL CASES WHERE REQUIRED BY NOTE
3. PROVIDE ADDED L PER DETAIL AT THE FOLLOWING CONDITIONS:
 - WHEN "H" > "D"/2
 - WHEN LESS THAN 4 BOLTS IN BEAM TO GIRDER CONNECTION
 - WHEN INDICATED ON FRAMING PLANS BY: 

TYPICAL DECK OPENING	6
-----------------------------	----------



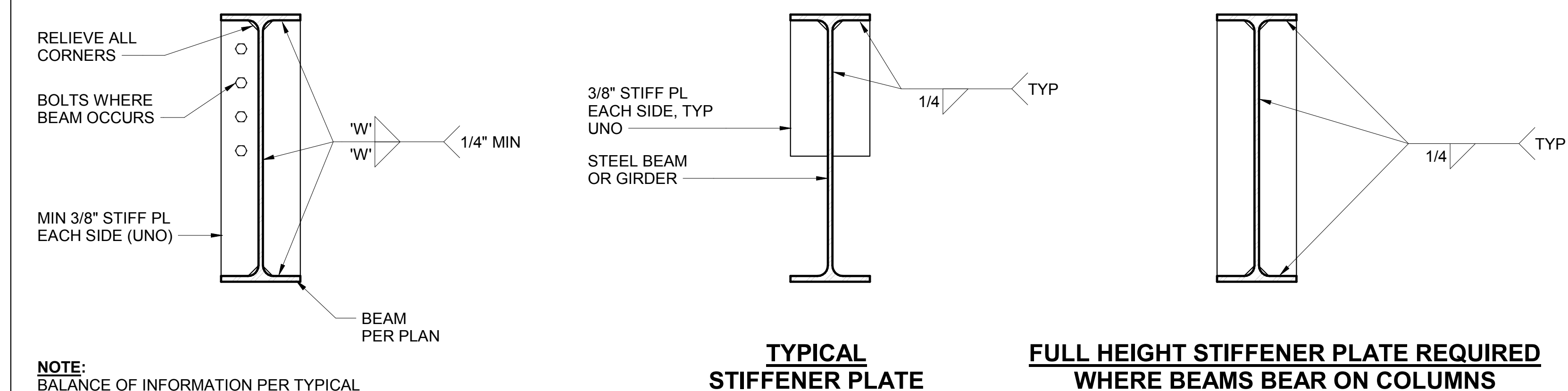
TYPICAL HANGER WIRE DETAILS	7
-----------------------------	---

TYPICAL BEAM TO BEAM CONNECTION



TYPICAL SHIM PLATE DETAIL

TYPICAL BEAM TO BEAM CONNECTION	12
---------------------------------	----



FULL HEIGHT STIFFENER PLATE REQUIRED
WHERE BEAMS BEAR ON COLUMNS

STIFFENER PLATES MAY BE ASTM A36 MIN.

TYPICAL FULL HEIGHT STIFFENER PLATE CONNECTION

BRANDOW & JOHNSTON
STRUCTURAL & CIVIL ENGINEERS
 700 S FLOWER ST #1800, LOS ANGELES, CA 90017
 TEL: (213) 596-4500 FAX: (213) 596-4599
 JOB #:S19-0231



**NORWALK LA MIRADA UNIFIED SCHOOL DISTRICT
LA MIRADA HIGH SCHOOL NEW
FOOTBALL STADIUM PROJECT**

DSA # 03-120551

NAC
ARCHITECTURE

MAC NO. 161-19015
DATE 12/10/2020

OSA BACKCHECK
SUBMISSION

TYPICAL STEEL AND METAL DECK DETAILS

S1.11